

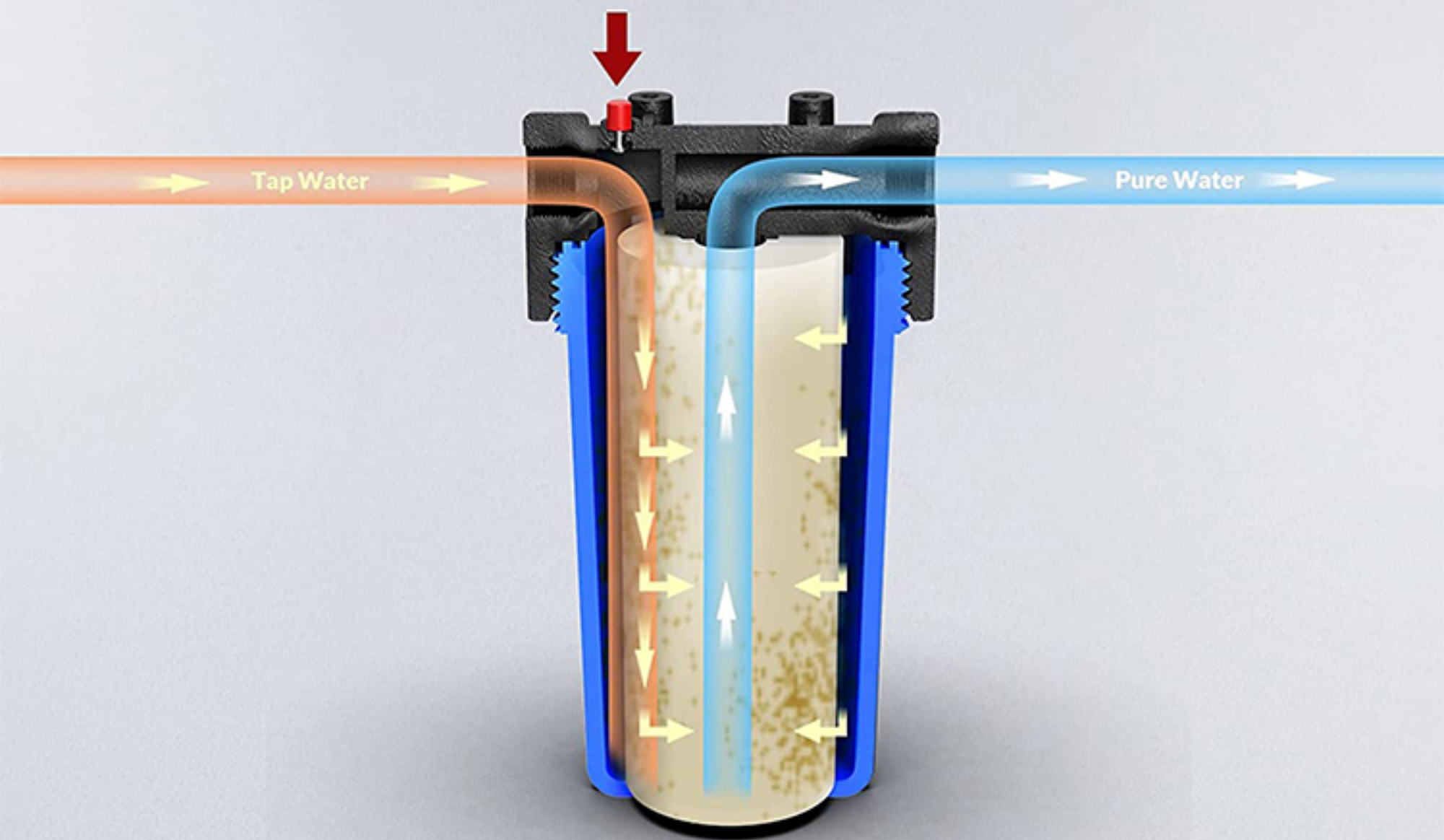
WHY USE A PRE-FILTER?

The main function of the front is the first filtration system for household water intake.
Mainly filter the sediment, rust and nuclear particles in the water...



HOW IT WORKS

Note: Press the red button to release pressure, making it easier to replace the filter.



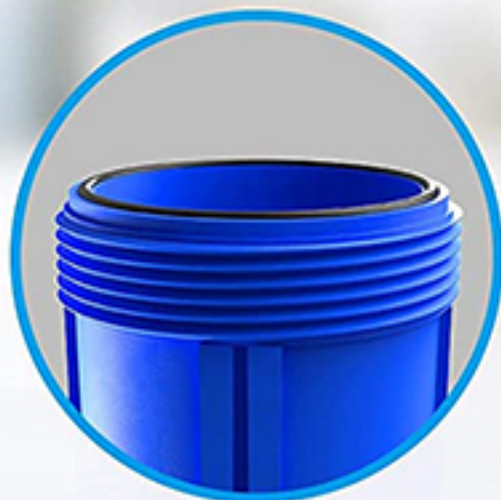
FEATURES

BIG BLUE FILTER HOUSING



1" NPT Thread

Standard Size



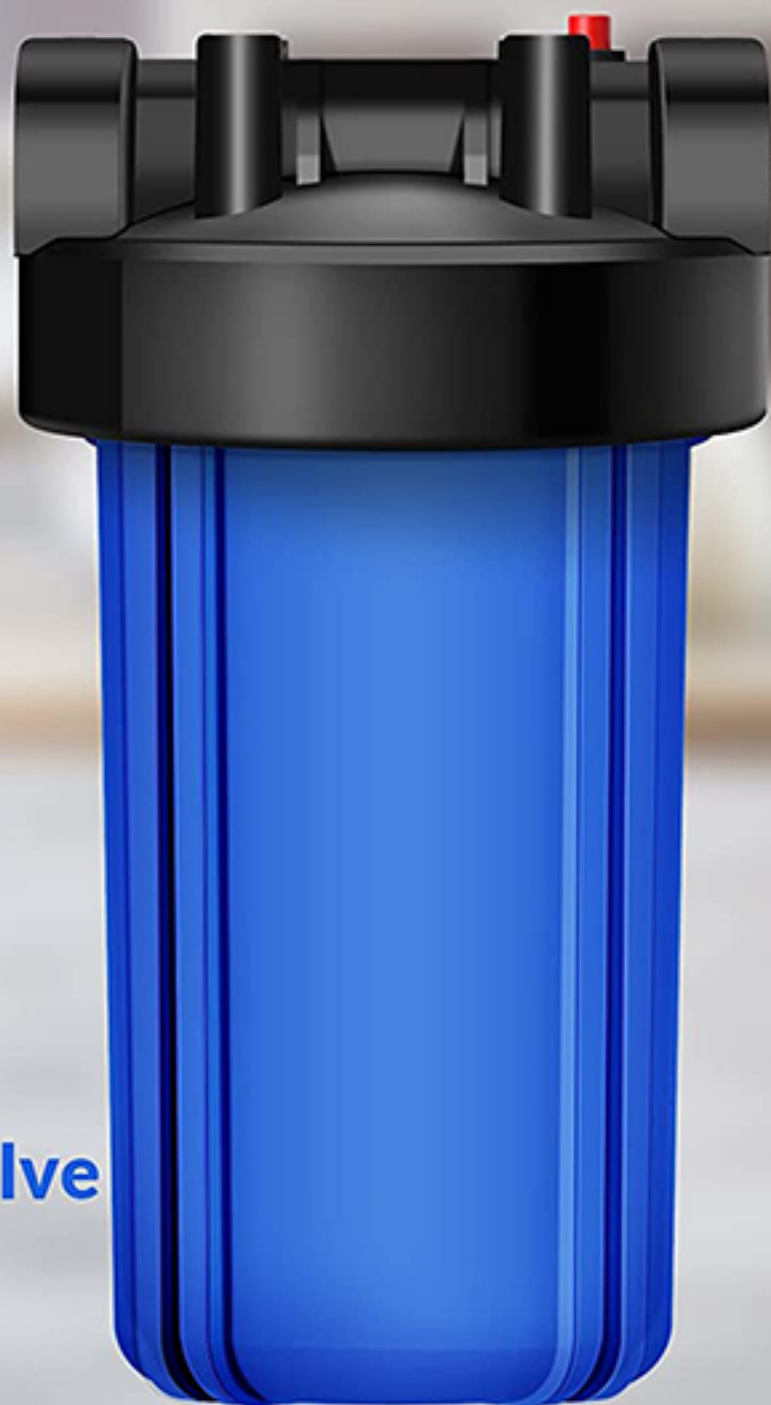
O-Ring

Sealing & Leak-Proof



Red Pressure Valve

Relief Pressure



PRODUCT PARAMETERS



product name : Whole house water filter

Inlet / Outlet: 1" NPT Thread

Compatibly Filter Dimensions : 4.5" x 10"

Max Flow Rate: 20 Gallons Per Minute

Applicable Water Quality : Municipal tap water Working Water Pressure Range: 15-90 PSI

Easy Filter Replacement: Build-in Red Pressure Relief Button

Applicable Water Temperature: 5-40 °C (41-104 °F)