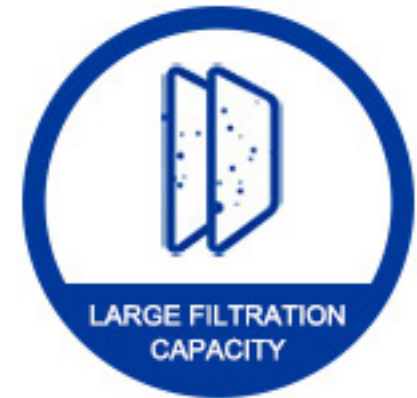


WHY USE A PRE-FILTER?

The main function of the front is the first filtration system for household water intake.

Mainly filter the sediment, rust and nuclear particles in the water...

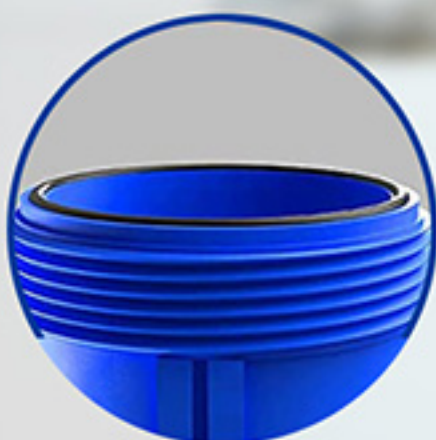


FEATURES

BIG BLUE FILTER HOUSING



1/2" or 3/4" Thread
Standard Size



O-Ring
Sealing & Leak-Proof

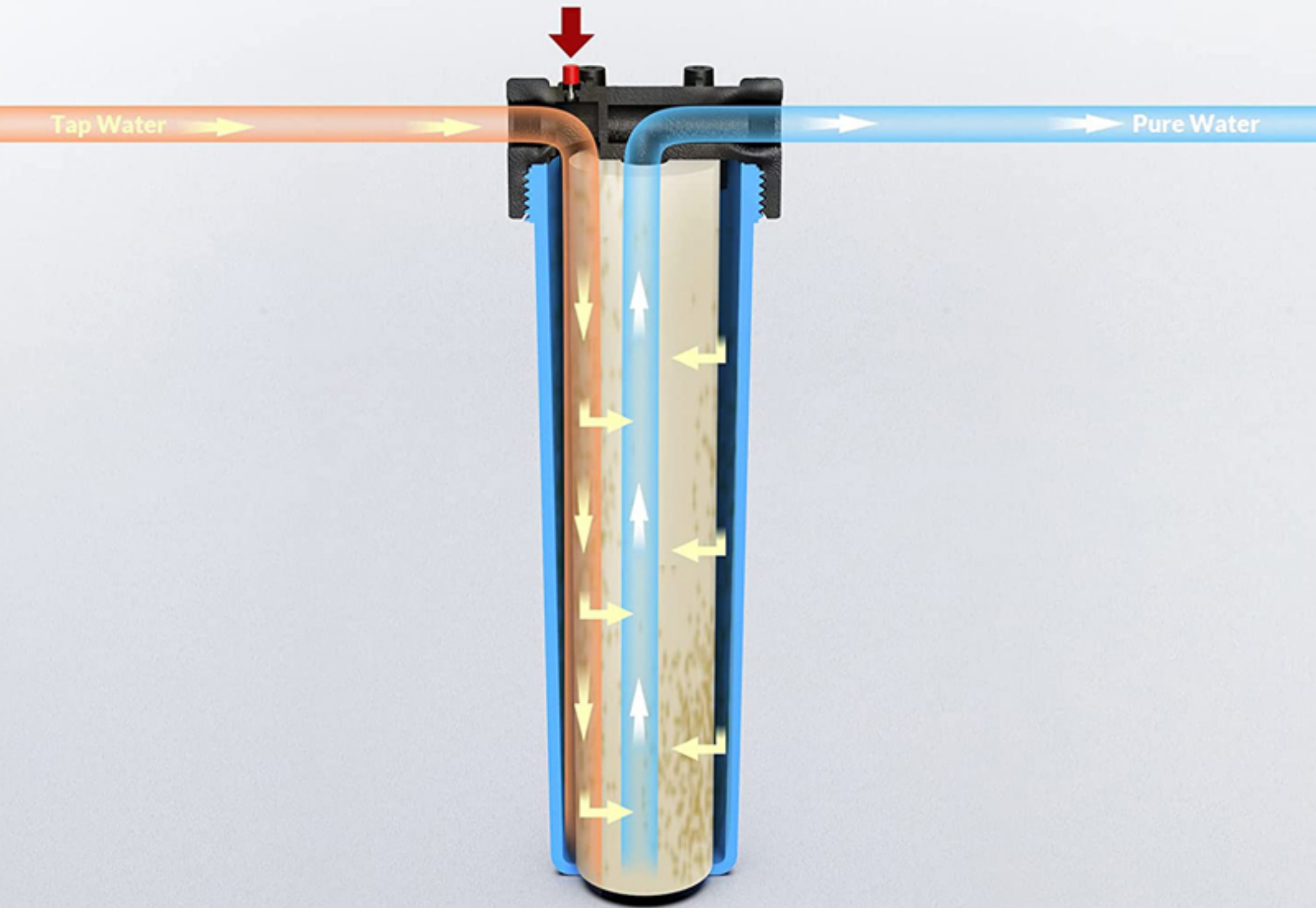


Red Pressure Valve
Relief Pressure



HOW IT WORKS

Note: Press the red button to release pressure, making it easier to replace the filter.



WHOLE HOUSE PROTECTION

Protect your home appliances and provide clean drinking water by pre-filter the well water and municipal tap water



Washing Machines



Dishwasher



Water Heater



Water Filter



PRODUCT PARAMETERS



Product name : Whole house water filter

Inlet/Outlet: 1/2"or 3/4"

Compatibly Filter Dimensions : 2.5" x 20"

Housing Material: Food Grade Polypropylene

Applicable Water Quality : Municipal tap water

Working Water Pressure Range: 15-90 PSI

Easy Filter Replacement: Build-in Red Pressure Relief Button

Applicable Water Temperature:5-40 °C(41-104 °F)